



## Origami Dress Tutorial and Free Pattern

### Description









Update your wardrobe staples with this beautiful linen dress. Inspired by Japanese craft origami, it is cut with clean, geometric lines and features wide sleeves, a rounded neckline and a large godet at back.

The loose style of this linen dress makes it perfect if you are a plus size lady. It will give you a gorgeous silhouette and all the attention will be on the color and your back. Plus, the minimalist shape perfectly complements the simplicity of the linen fabric.

Beautifully feminine and elegant, this dress could be worn to just about any kind of occasion. Keep it simple or pair it with statement jewelry and a pair of heels for a more sophisticated look.

## ***Materials***



2 yards of [IL019 INSIGNIA BLUE Softened Medium Weight Linen](#)

## Matching sewing thread

### ***Tools***



Scissors, pins, chalk, ruler, fabric marker, sewing machine

### ***Difficulty***

Beginner

### ***Time***

4 hours

### ***Pattern***

You can access the dress pattern by following this link [HERE](#) and the

printable pocket template can be found [HERE](#). Remember to add seam allowances as indicated in the pattern.

Note that you'll also need to cut a strip of fabric on the bias that is 1.5 wide and approximatively 25 long for neckline binding. For detailed instructions on how to cut your bias tape please follow [this tutorial](#).

The diagram shows the pattern for sizes XS-M. If you need help grading your pattern, please follow [this tutorial](#). Also, if you need help adjusting the pattern for a fuller bust, we have a great Full Bust Adjustment tutorial [HERE](#).

## ***Steps***

Note: Prewash your fabric and tumble dry it until it is still slightly moist, dry in room temperature. Iron the fabric so it is easier to work with.

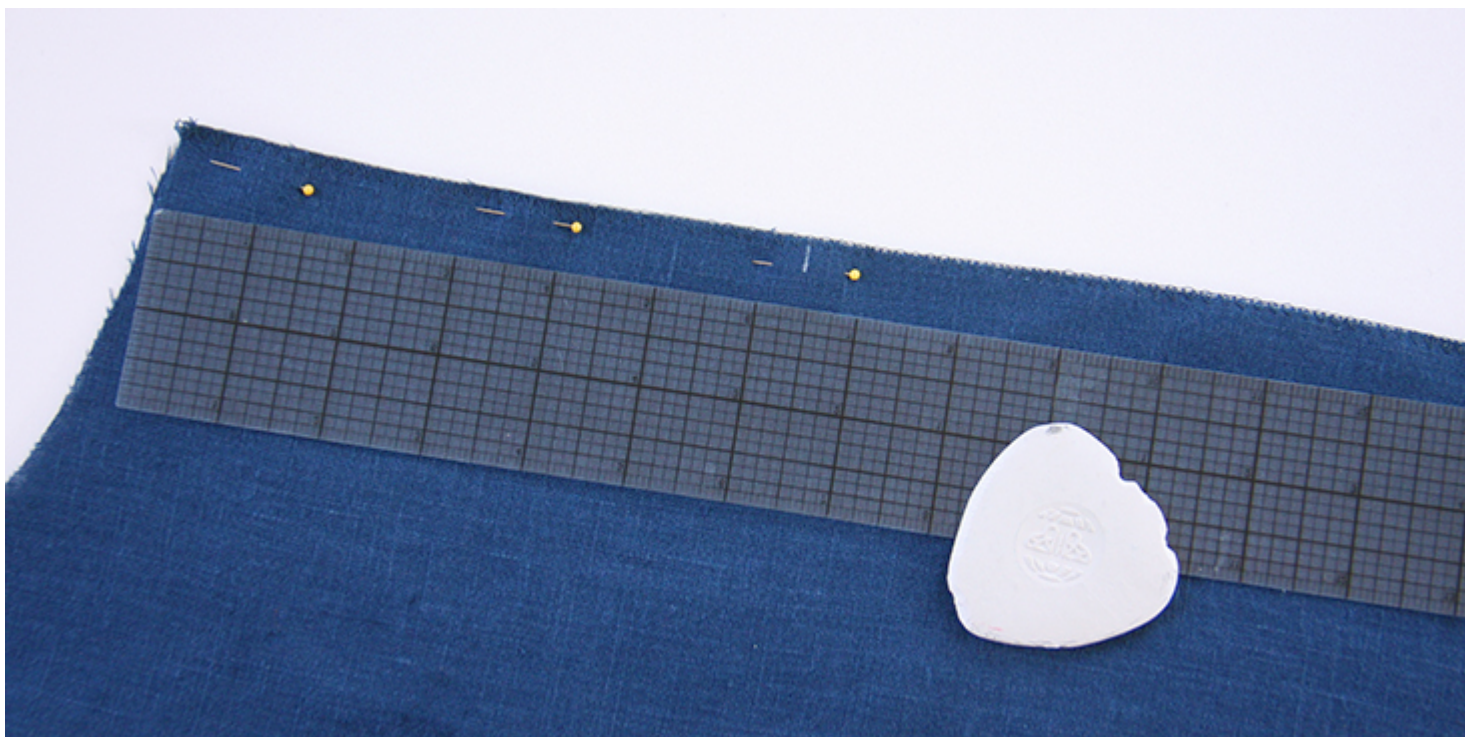
The back of the dress features a large godet so let's start with that.

1. First of all, you need to serge or zigzag the raw edges of the center back pieces and the long diagonal edges of your triangular inset to prevent the fabric from fraying in the future.





2. Pin your back pieces right sides together at the center seam, measure  $6\frac{3}{8}$  from the neckline edge and make a mark.



3. Sew the two pieces together starting from the neckline edge and down to



the mark. Remember to backstitch. Press the seam allowances open. The end of this seam is the start of your godet.



4. Attach the godet by following [our detailed tutorial](#).





5. With your godet in place, you can assemble the front and the back of the dress. Pin the panels' right sides together at the shoulder/upper sleeve seams.



6. Sew at a 3/8" (1 cm) seam allowance. Trim the raw edges down to 1/4", serge or zigzag them together to prevent the fabric from fraying. Press the serged/zigzagged seam allowances up towards the back of your dress.



7. Bind the neckline with the bias band as demonstrated in [our step-by-step tutorial](#).





8. Attach the inseam pockets to the side seams 9,5 inches from the armhole. Refer to our detailed tutorial [HERE](#) for instructions.





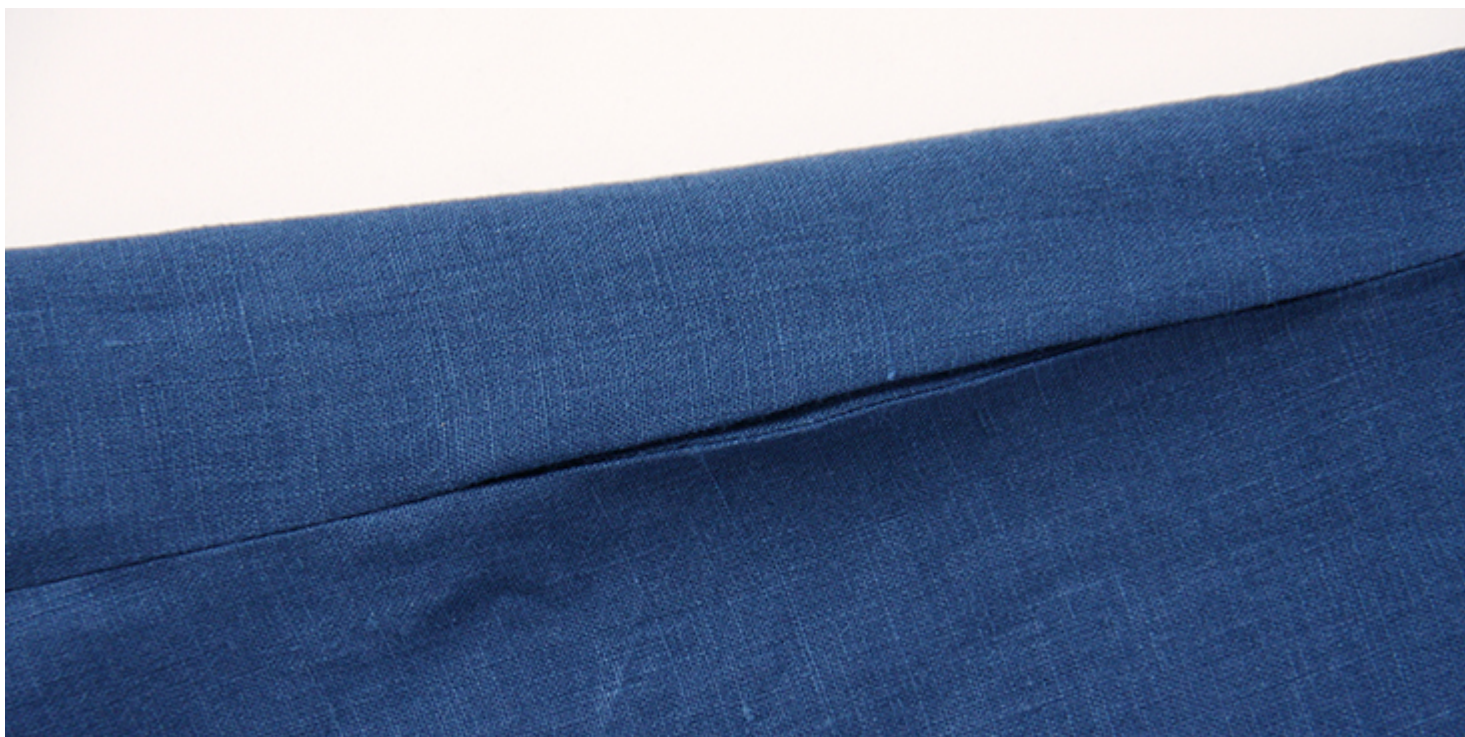
9. Pin the front and the back of the dress at the underarm, the sides seams and the pockets right sides together.



10. Sew along the sleeves' underarms, side seams and the pockets all in



one seam at a 3/8" (1 cm) seam allowance. Press the seam open.



11. Finish the sleeve openings with a rolled hem. Fold your fabric twice towards the wrong side, 3/8" to 1/2 and edgestitch in place.





12. Repeat step 12 and finish the bottom hem of your dress.





Give your dress a good last press and you are all done!

**Check out [our selection of linen](#) and see which of our fabrics inspire you for this project. This dress will look great in any color!**

## CATEGORY

1. FREE PATTERNS
2. TUTORIALS

## Category

1. FREE PATTERNS
2. TUTORIALS

## Date Created

April 3, 2018

## Author

rima-khusainova